

GÖKSU SJD-xx-AYS

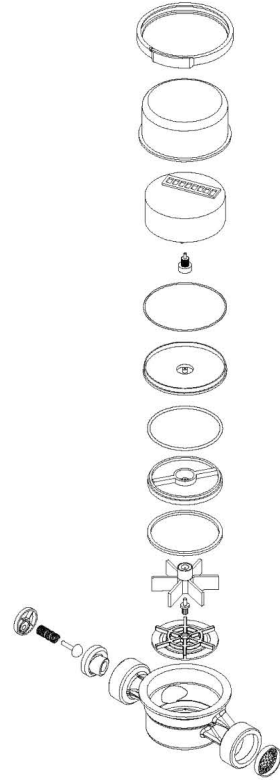
SINGLE JET DRY TYPE WATER METER

Key Technical Advantages

- **Single-Jet Technology:** Designed with a single water stream impacting the turbine, this meter provides high sensitivity in a compact form factor. Its streamlined body design allows for easy installation in confined spaces, making it ideal for residential apartments and sub-metering.
- **R160 Measurement Precision:** Delivering superior metrological performance, the SJD series achieves a measurement ratio of $Q3/Q1 \leq 160$ (R160). It accurately records consumption even at low flow rates, ensuring efficient billing and leakage detection for utilities.
- **MAP 16 High Pressure Resistance:** Built with a durable brass body, the meter is rated for a Maximum Admissible Pressure of 16 Bar (MAP 16). This high pressure rating provides enhanced protection against pressure surges and hydraulic shocks compared to standard 10-bar meters.
- **Dry Type Register:** The mechanical indicator is separated from the measurement chamber, ensuring it never comes into contact with water. This prevents fogging, condensation, and corrosion, guaranteeing clear readability of the 8-drum display (5 for m³, 3 for liters) throughout the meter's service life.

Additional Specifications:

- **Technology:** Single-Jet, Dry Dial.
- **Temperature Class:** T30/T50 (Suitable for cold water up to 50°C).
- **Protection Class:** IP68.
- **Body Material:** Brass.
- **Mounting Position:** Horizontal (H).



GÖKSU

SJD-xx-AYS

Data Sheet

SJD-15-AYS

SJD-20-AYS

SJD-25-AYS

Diameter - mm

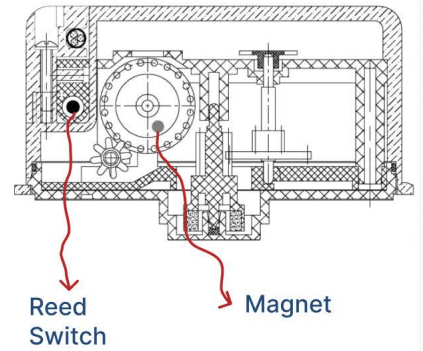
DN15

DN20

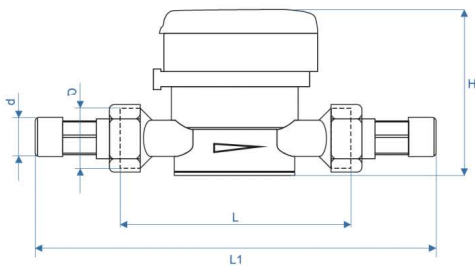
DN25

Overload flowrate Q_4	$\leq 3,125$	$\leq 5,00$	$\leq 7,875$
Permanent flowrate Q_3	$\leq 2,50$	$\leq 4,00$	$\leq 6,30$
Transitional flowrate Q_2	$\geq 0,025$	$\geq 0,04$	$\geq 0,0672$
Minimum flowrate Q_1	$\geq 0,0115625$	$\geq 0,025$	$\geq 0,042$
Measuring range (R) Q_3/Q_1	≤ 160		
Accuracy Class	2		
Temperature class T	T30, T50		
Water pressure class Bar	MAP 16		
Horizontal length mm	80-115	130	160
Pressure loss class Bar	ΔP 63		
Flow profile sensivity class	U0 D0		
Orientation	H (Yatay)		

Specification for Pulse Output



Dimensions



Size	DN 15	DN 20	DN 25
L	110	130	160
L1	204	234	280
D	G3/4	G1B	G1 ¹ / ₄ B
d	R ¹ / ₂	R ³ / ₄	R1
H	84,5	84,5	106