



YİĞİT-xx-Y

Smart Water Meters with Electronic Index

Precision Measurement, Long Life, and Prepayment Infrastructure

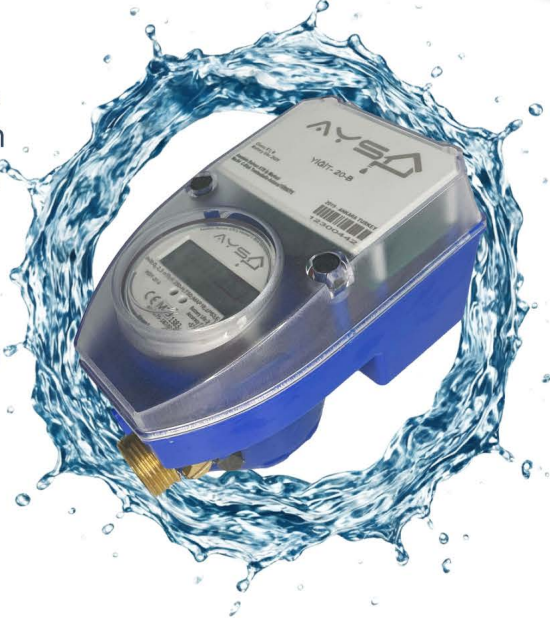
The Euromet AYSU YİĞİT-XX-Y series is an advanced water meter family that combines the durability of mechanical turbine technology with the digital precision of an electronic calculation unit. Designed for residential and commercial applications, this series is available in DN15, DN20, and DN25 sizes.

Key Features:

- **Hybrid Measurement Technology:** It detects water flow via a mechanical turbine and transmits the data through a magnetic coupling to the electronic calculation unit for digital-precision recording.
- **High Measurement Precision (R250):** Exceeding standard requirements, the R250 (Q3/Q1) measurement ratio ensures that even very low flow rates are detected, preventing revenue loss.
- **Long Battery Life:** Powered by a non-replaceable lithium battery, offering a service life of more than 10 years.
- **Prepayment Feature:** The meters are equipped with a built-in prepayment device, making them suitable for smart water management projects requiring credit-based usage.
- **Durable and Flexible Body Options:** Available with either a Brass (B) or Composite (C) body to suit specific project requirements.
- **Digital Display:** Consumption data, flow rates, and status symbols are clearly legible on the 8-digit LCD screen.

Security and Quality

- **Tamper Protection:** The threaded ring protecting the electronic unit and the meter body are sealed together to prevent unauthorized access.
- **Check Valve Support:** An optional non-return valve (check valve) can be installed in the outlet channel without affecting the metrological seal integrity.
- **Certification:** Fully compliant with the 2014/32/EU (MID) Directive, OIML R 49, and EN ISO 4064 standards.



Data Sheet

YİĞİT-15-Y

YİĞİT-20-Y

YİĞİT-25-Y

Diameter - mm

DN15

DN20

DN25

Overload flowrate Q_4	$\leq 3,125$	$\leq 5,00$	$\leq 7,875$
Permanent flowrate Q_3	$\leq 2,50$	$\leq 4,00$	$\leq 6,30$
Transitional flowrate Q_2	$\geq 0,016$	$\geq 0,0256$	$\geq 0,0403$
Minimum flowrate Q_1	$\geq 0,010$	$\geq 0,016$	$\geq 0,0252$
Measuring range (R) Q_3/Q_1	≤ 250		
Accuracy Class	2		
Temperature class T	T 50		
Water pressure class Bar	MAP 16		
Horizontal length mm	110-190	160-190	160-260
Pressure loss class Bar	ΔP 63		
Flow profile sensivity class	U0 D0		
Orientation	H (Yatay)		

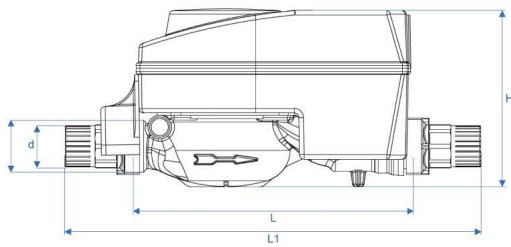


Valve Closed



Valve Open

Dimensions



Size	DN 15	DN 20	DN 25
L	190	190	225
L1	265	265	300
D	G3/4	G1B	G1 1/4B
d	R 1/2	R 3/4	R1
H	119	119	127